



Overview:

This model features electric operation of height and Trendelenburg tilt for improved patient positioning for podiatry and various lower limb procedures. The chair has dual adjustable leg rests with extending heel pads. The leg sections manually lower from +10° to -90° for various lower limb procedures. The backrest has manual adjustment from +85° to -15° and the fold-down armrests can be folded back for patient transfer or removed if required. The chair can also be used for other lower limb treatment procedures. A range of optional accessories are available to meet the needs of these requirements.



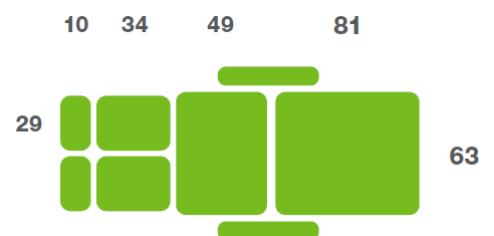
Benefits

- Lifetime frame & 5 year parts guarantee - see website for further details
- Electric operation of height and Trendelenburg tilt
- Adjustable angle backrest for supporting the patient in sitting position
- The backrest is fitted with fold-down armrests - removable if required
- Positive and negative adjustment of the backrest angle from -15° to +85°
- The foot section angle is fully adjustable from +10° to -90°
- The heel pads can be extended to position the foot for various procedures
- Safe working load and lifting capacity of 250kgs (550lb / 39 stone)
- Retractable wheel system provides easy positioning of the chair
- Low patient transfer height of 52cm (20")
- Wide choice of options, colours and accessories to meet user requirements

Overall Dimensions

Length: 176cm (69") approx
 Width: 63cm (25") approx
 Height: 52cm - 101cm approx
 (20" - 40") approx

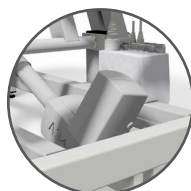
Upholstery Dimensions



Options & Accessories:



Matching Operators Chair



Battery Back-up



Motorised Back



Foot Switch Operation



D Cushion



Paper Roll Holder

NHS Approved Supplier

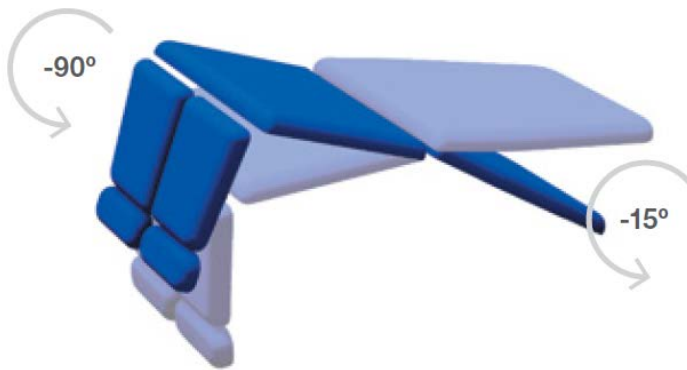


t: +44 (0)1449 767887
 e: sales@plinthmedical.com
 www.plinthmedical.com

Operational Parameters



Trendelenburg Tilt 20°



Model 93CDT - Electric Version

Standard Features

- Designed and manufactured in the UK
- Lifetime frame & 5 year parts guarantee
- 16 year average lifespan
- Electric operation with Trendelenburg tilt
- Comfort foam
- Easy operation
- Low running costs
- Hardwearing anti-microbial vinyl
- Safe working load 250kg
- Retractable castors
- Hoist clearance 130mm
- Divided & extending legs
- Removable fold back arm rests

Technical Standards

- IP Rating - IPx4
- EEC Classification - MDD93/42/EEC Annex IX Class 1
- Electrical Standard - IEC601 Part 1 + 60601 P (EN)
- Vinyl Flame Retardant to CRIB 5 (BS 7176)
- Foam to BS 5852: Part 2: 1982, Ignition Source 5 [CRIB 5]
- CE Marked
- Externally audited to ISO9001:2015 by LRQA

Delivery Promise

- Delivery to UK mainland in just 7-10 working days
- Faster service may be available if required
- Overseas delivery 7-10 days plus shipping time

Upholstery Vinyl

- Flame retardant to BS 5852 Ignition Source 5 - CRIB 5 (BS 7176) Medium Hazard
- Independently tested to verify effectiveness at reducing the spread of MRSA, E.coli & other similar bacteria & fungi
- Rated at 500,000 Martindale rubs without damaging or marking the top layer, making it suitable for all high-traffic, heavy-duty areas
- Phthalate free
- Please note: If the upholstery colour is not specified, 'Almond' will be supplied



Jasmine



Battleship



Cobalt



Cocoa



Grape



Mulled Wine



Pillarbox



Gingersnap



Candy



Applemint



Sapphire



Atlantic Blue



Lupin



Denim



Cool Blue



Rainforest



Wasabi



Citrus Green



Marigold



Almond

Plinth Medical Ltd
Barric Lane
Occold, Eye
Suffolk, United Kingdom
IP23 7PX

t: +44 (0)1449767887
e: sales@plinthmedical.com
www.plinthmedical.com

Plinth | Medical